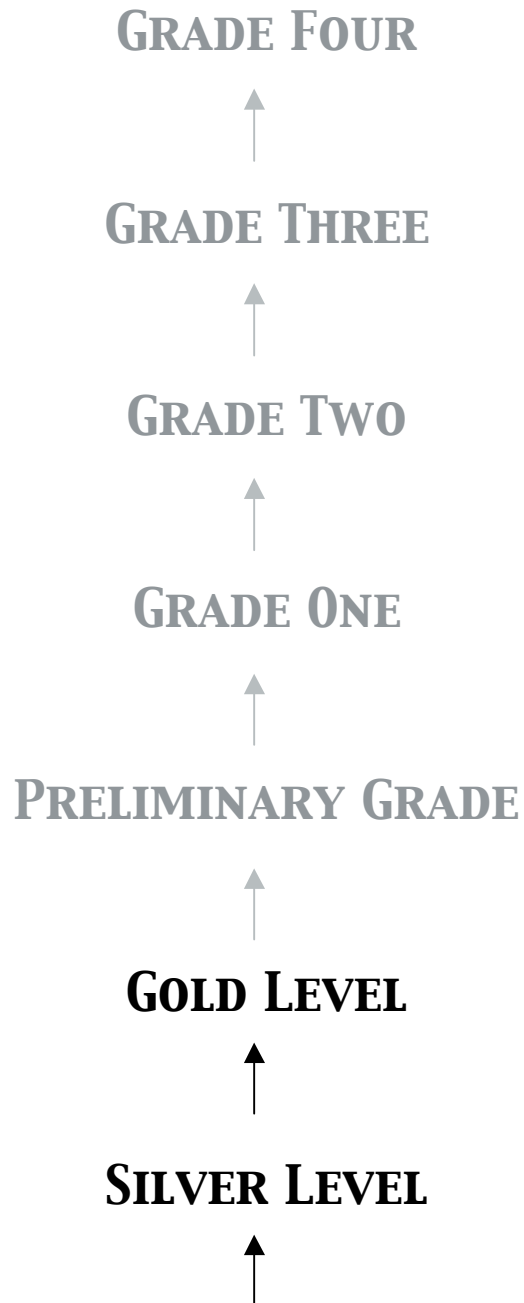




FOUNDATION OF
MUSIC EDUCATION

LEVELS OF ASSESSMENT



*These levels are
currently being
developed*

BRONZE LEVEL





BRONZE LEVEL SYLLABUS

FOUNDATION OF MUSIC EDUCATION

The Bronze Level Syllabus is made up of three parts, Technical work (20%), Practical Performance (60%) and Ear Tests, Sight Reading & General Knowledge (20%).

TECHNICAL WORK

Five Finger Exercise

- C major hand position
- Hands separately and hands together
- Tempo: crotchet / quarter note = 72
- Exercise to be played with a clear, even legato tone demonstrating finger independence.



Chords playing

- Play either Chord I (root inversion) or V7 (close position), as shown
- Hands separately
- Chords to be played with correct fingering, all three notes played simultaneously



EAR TESTS

Rhythm

The examiner will clap a one (1) bar rhythm pattern, twice, for the student to clap back. Example will include the following rhythms: crotchets, two quavers, crotchet rests. Two (2) examples.

Melody

The examiner will play a one (1) bar melody for the student to sing back. Example will contain notes from C-G and involve steps, skips or repeated notes. Two (2) examples.

Chord Identification

The examiner will play a Chord I in C major close position followed by a I or V7 chord. The student is to identify the second chord as I or V7.

SIGHT READING

Students will be asked to play an example containing 4 notes (1 bar) written as crotchets. The example will contain notes between and including C & G in the treble clef and commence on either C or G.

GENERAL MUSIC KNOWLEDGE

Students will be expected to answer questions about their pieces with regards to the following concepts:

- *Note Identification:* Identify the name of any notes written in pieces performed.
- *Rhythm Identification:* Identify names and/or values of rhythm values in pieces performed.
- *Dynamics/Articulation:* Identify and explain: staccato, legato, piano, forte, forte as they occur in pieces performed.
- *Time Signature:* Identify 3/4 and 4/4 (or common time) time as three or four beats in a bar.
- *General Terms:* Identify and explain any other terms, signs, etc as they appear in pieces performed. eg. Bar line, repeat sign, treble clef, bass clef, etc.

PRACTICAL PERFORMANCE

Play three contrasting pieces or two pieces plus your own composition to be selected from the following resources:

The Studio (Beginner 2 Star Pieces or Piano Fiesta)

- My Pet Dog
- Animal Act (*Line 1 & 2 only*)
- Pet Parade
- Card Game
- In Flight
- Skater's Dream

JKC 2: Music Munchkins Level 2

- March
- Ode to Joy
- Fanfare
- Mirrors
- Published by Forte School of Music*

JKC 3: Music Munchkins Level 3

- Ant's Brigade
- Sorbet City
- Published by Forte School of Music*

Piano Keys Level 1a

- Symphony No. 9
- Fox Hunt
- Barcarolle
- Edinburgh Piper
- Published by Forte School of Music*

RHYTHM CLAPPING EXAMPLES

BRONZE LEVEL

The examiner will clap a one-bar rhythm pattern for the candidate to clap back. The example will be from the rhythms listed below. Two (2) examples.

The examiner will give instructions like...

“Clap after me. Listen, 1, 2, 3, 4...”

Examiner claps rhythm:

Candidate claps rhythm:



MELODY SINGING EXAMPLES

The examiner will play a one (1) bar melody (3 crotchet beats and a rest) for the candidate to sing back. The example will be from the melodies listed below. Candidates may sing solfege, or use the sounds: 'lah', 'dah', or 'mah.' Two (2) examples.

The examiner will give instructions like...

"I want you to sing the notes that I play for you. First, Listen to the key. [play chords] Now, sing these notes for me.

EXAMPLE ONLY

CHORD IDENTIFICATION

The examiner will play a Chord I in C major root position followed by a I or V7 chord. The candidate is to identify the second chord as I or V7. One (1) example.

The examiner will give instructions like...

"I will play some chords for you to hear the key, just listen. [Examiner plays chords] Now I am going to play some chords. The first one will be chord I. Can you tell me what the second chord is?"



SIGHT READING EXAMPLES- NOTES

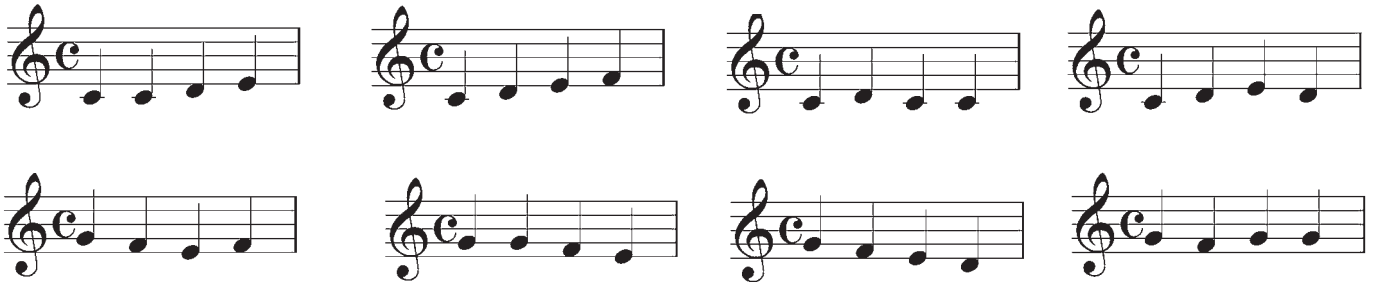
BRONZE LEVEL

Candidates will be asked to read and play 4 notes from the examples listed below.

One (1) example.

The examiner will give instructions like...

“Here are some notes that I would like you to play for me. 1. Is the first note ‘do’ or ‘so’? 2. Are there any repeated notes - like two ‘dos’ in a row? 3. Do the notes move in step or skip?”



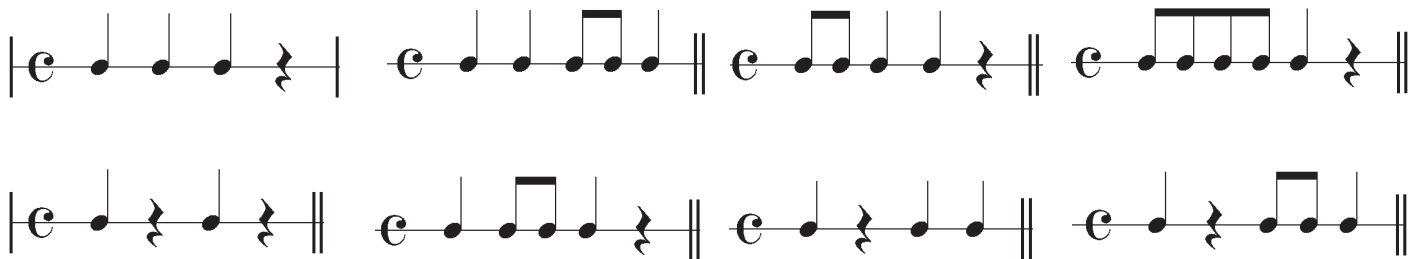
SIGHT READING EXAMPLES- RHYTHMS

Candidates will be asked to read, clap and vocalise a one-bar rhythm from the examples listed below.

One (1) example.

The examiner will give instructions like...

“Here is a rhythm that I would like you to clap for me. Remember to say the names like ‘tun’ or ‘ti-ti’ while you are clapping”





FOUNDATION OF MUSIC EDUCATION

Assessment Report

BRONZE LEVEL

SAMPLE REPORT ONLY

Candidate Name: _____ Candidate Code: _____

Examiner Code: _____ Teacher Code: _____

Date of Exam: _____

Please Note:

A tick indicates the candidate has completed the requirement, otherwise no mark will be shown.

Candidates who have not met sufficient criteria overall, will be given a participation certificate only.



1. TECHNICAL WORK

Five Finger Exercise

Technical Elements	1	2
Played correct notes		
Played correct rhythm		
Played legato		
Played staccato		
Played with consistent tempo		
Played with suitable hand shape		

C Major Chords I and V7

Technical Elements	1	2
Played correct notes		
Played with correct fingering		
Played all notes simultaneously		
Played suitable hand shape		

Summary - Technical Work

1. The candidate demonstrated the ability to play both the exercise and chords and excelled in all technical elements listed.

2.

2. The candidate demonstrated the ability to play with most of the technical elements listed and is competent in this area.

3.

3. The candidate demonstrated today, a need for further development and improvement in this area of the assessment.

2. PRACTICAL PERFORMANCE

Piece 1 _____

Piece 2 _____

Piece 3 _____

Summary - Practical Performance

1. The candidate demonstrated through practical performance, an excellent knowledge and application of all technical elements listed.

2.

2. The candidate demonstrated through practical performance, competency in the knowledge and application of most of the elements listed.

3.

3. The candidate demonstrated today, a need for further development and improvement in this area of the assessment.

Technical Elements	1	2	3
Played correct notes			
Played correct rhythm			
Appropriate tempo			
Consistent tempo			
Suitable hand shape			
Correct articulation(<i>if applicable</i>)			
Correct dynamics(<i>if applicable</i>)			
Played at the correct 8ve			
Accurate RH/LH co-ordination			

3. MUSICIANSHIP

Aural Development - Rhythm

Technical Elements	1	2
Clapped correct rhythm		
Consistent tempo		

Summary - Aural Development

1. The candidate demonstrated all technical elements listed and displayed a very high level of aural ability for this level.

2.

2. The candidate demonstrated most of the technical elements listed and displayed a competent level of aural ability.

3.

3. The candidate demonstrated today, a need for further development and improvement in this area of the assessment.

Aural Development - Melody

Technical Elements	1	2
Sang notes on pitch		
Consistent tempo		

Aural Development - Chords

Technical Elements	1
Correctly identified chord	



3. MUSICIANSHIP CONT...

Reading Development - Note

Technical Elements	1
Played correct notes	
Played correct rhythm	
Appropriate tempo	
Consistent tempo	

Reading Development - Rhythm

Technical Elements	1
Clapped correct rhythm	
Identified rhythms	
Appropriate tempo	
Consistent tempo	

Summary - Reading Development	
1. The candidate demonstrated all technical elements listed and displayed an excellent reading ability today.	<input type="checkbox"/>

2. The candidate demonstrated most of the technical elements listed and displayed a competent level of aural ability.	<input type="checkbox"/>
---	--------------------------

3. The candidate demonstrated today, a need for further development and improvement in this area of the assessment.	<input type="checkbox"/>
---	--------------------------

4. GENERAL MUSIC KNOWLEDGE

Technical Elements	1
Treble Clef	
Bass Clef	
Bar line	
Double bar line	
Stave	
C is for Common Time	

5. PRESENTATION

Criteria	1
Dressed Appropriately	
Greeted Examiner	
Correct seating position	
Correct posture	

6. SUMMARY

Overall Result
Successfully completed all requirements for Bronze Award

SAMPLE REPORT ONLY

General Comments

Examiner's Signature _____

Date _____





Musical notation for a five-finger exercise in 4/4 time, written on a single staff with a treble clef. The exercise consists of 12 measures:

- Measure 1: Quarter notes G4, A4, B4, C5. A finger number '1' is placed above the first measure.
- Measure 2: Quarter notes D5, E5, F5, G5. A slur is placed under these notes.
- Measure 3: Quarter notes G5, F5, E5, D5. A slur is placed under these notes.
- Measure 4: Quarter notes C5, B4, A4, G4. A finger number '5' is placed above the first note.
- Measure 5: Quarter notes G4, A4, B4, C5. A slur is placed under these notes.
- Measure 6: Quarter notes D5, E5, F5, G5. A slur is placed under these notes.
- Measure 7: Quarter notes G5, F5, E5, D5. A slur is placed under these notes.
- Measure 8: Quarter notes C5, B4, A4, G4. A slur is placed under these notes.
- Measure 9: Quarter notes G4, A4, B4, C5. A slur is placed under these notes.
- Measure 10: Quarter notes D5, E5, F5, G5. A slur is placed under these notes.
- Measure 11: Quarter notes G5, F5, E5, D5. A slur is placed under these notes.
- Measure 12: Quarter notes C5, B4, A4, G4. A slur is placed under these notes.





RH I V⁷

3
1

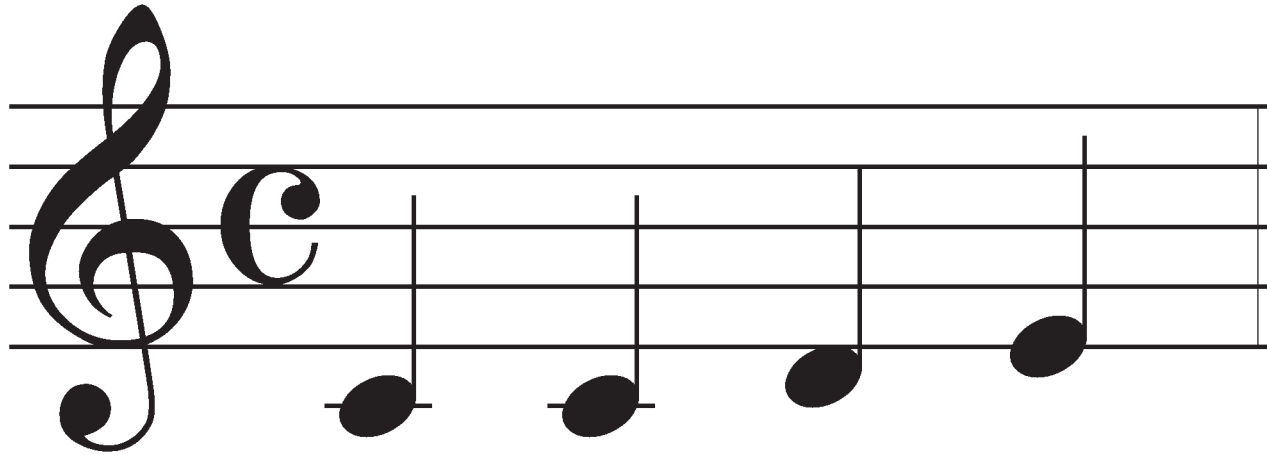
3
4
1

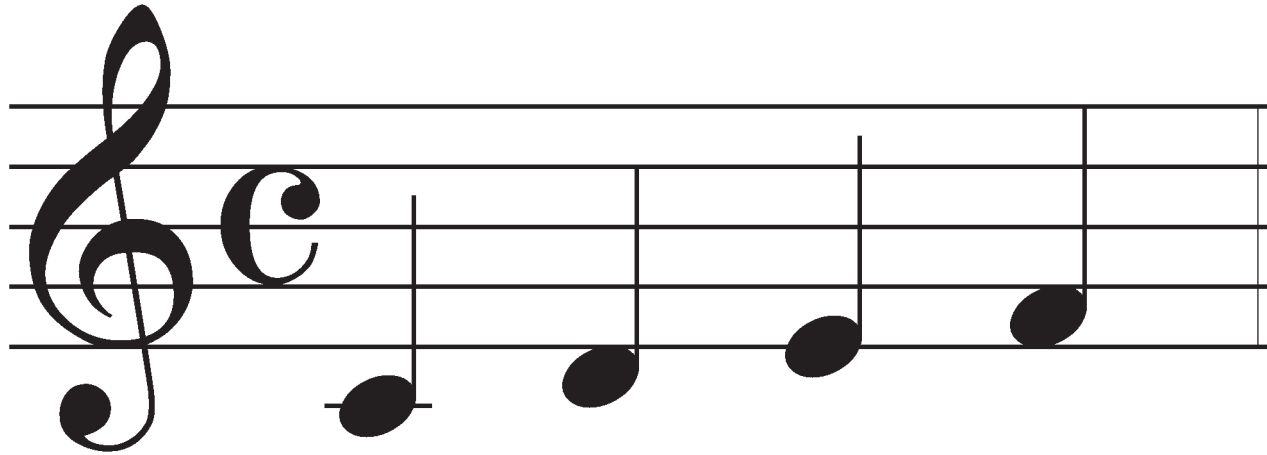
A musical staff in treble clef. The first measure contains a triad (I) with notes G4, B4, and D5. Above the notes are the numbers 3 and 1. The second measure contains a dominant seventh chord (V7) with notes F#4, A4, C5, and E5. Above the notes are the numbers 3, 4, and 1. The staff ends with a double bar line.

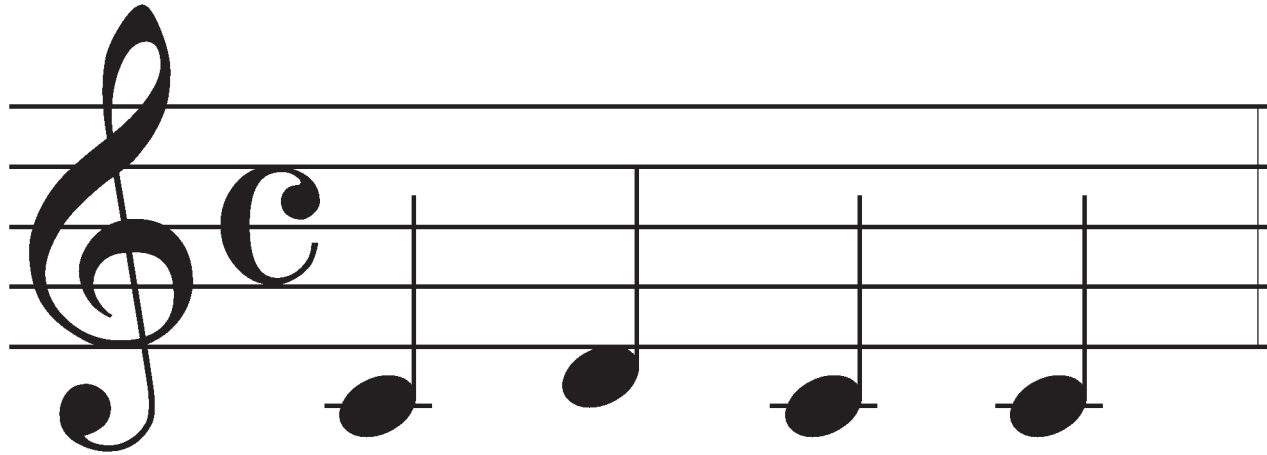


LH I V⁷

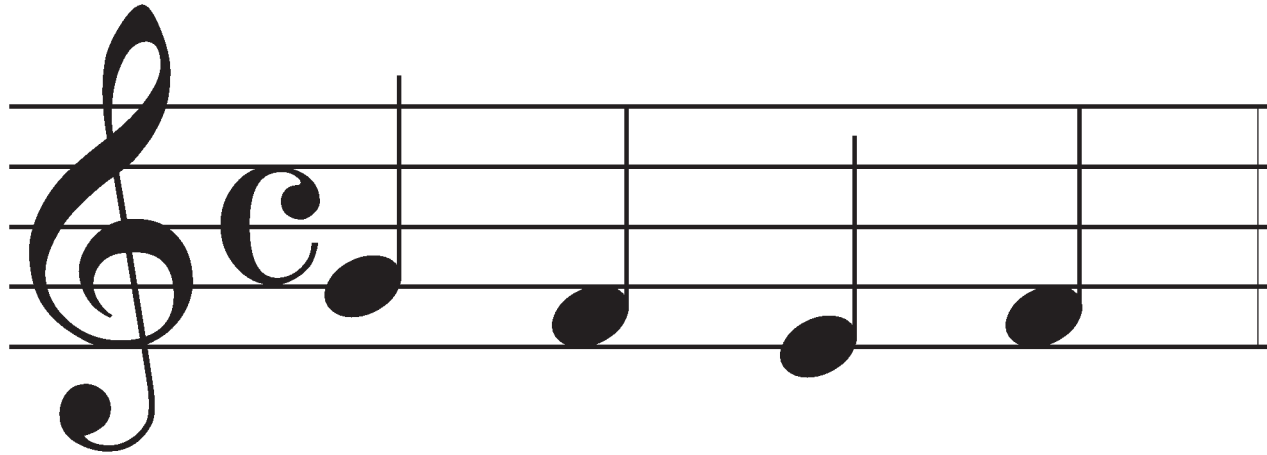
The image shows two chords on a bass clef staff. The first chord is a C major triad (C-E-G) with fingering 1-3-2. The second chord is a C7 dominant seventh triad (C-E-G-Bb) with fingering 1-2-1-5.

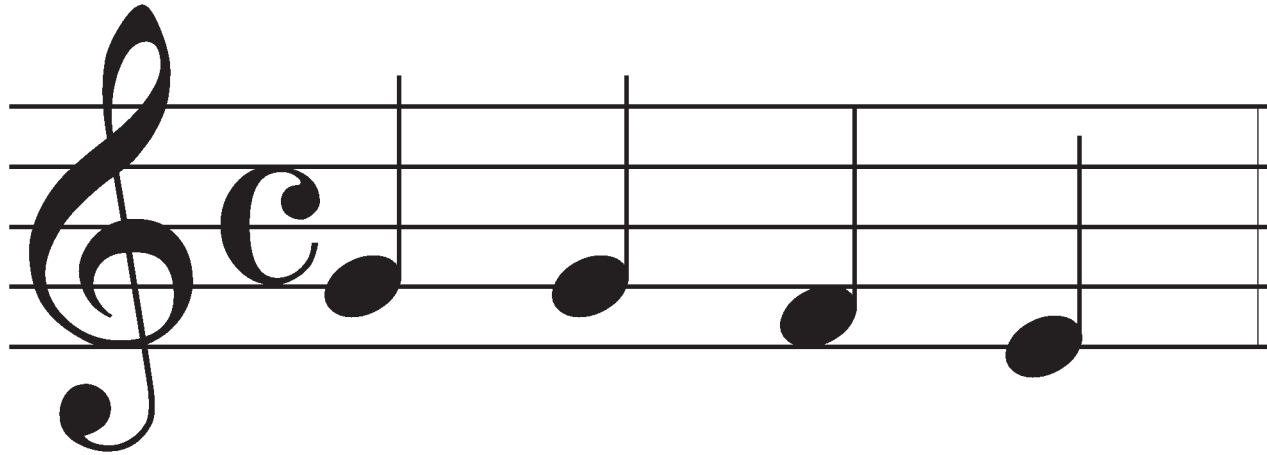


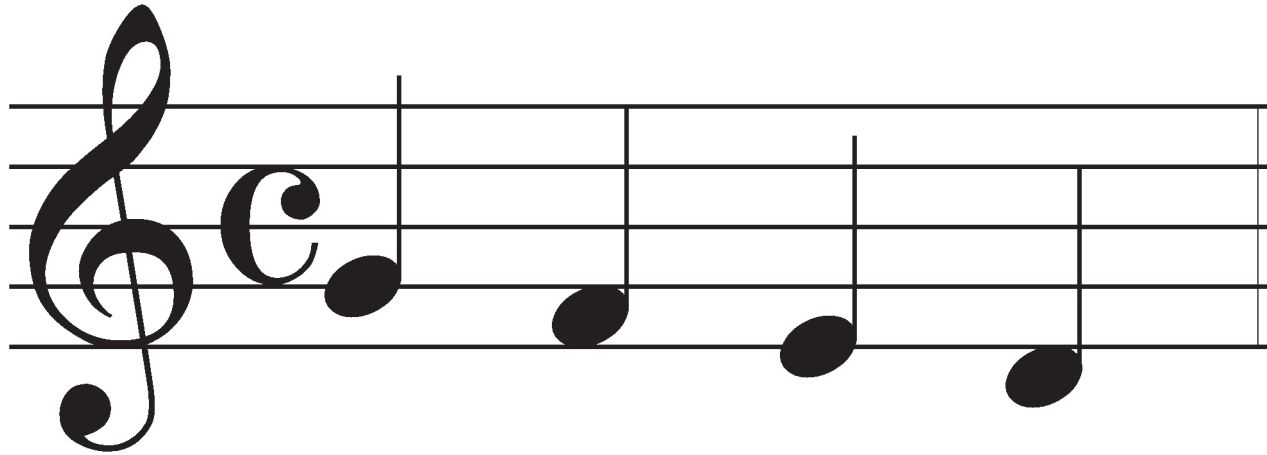


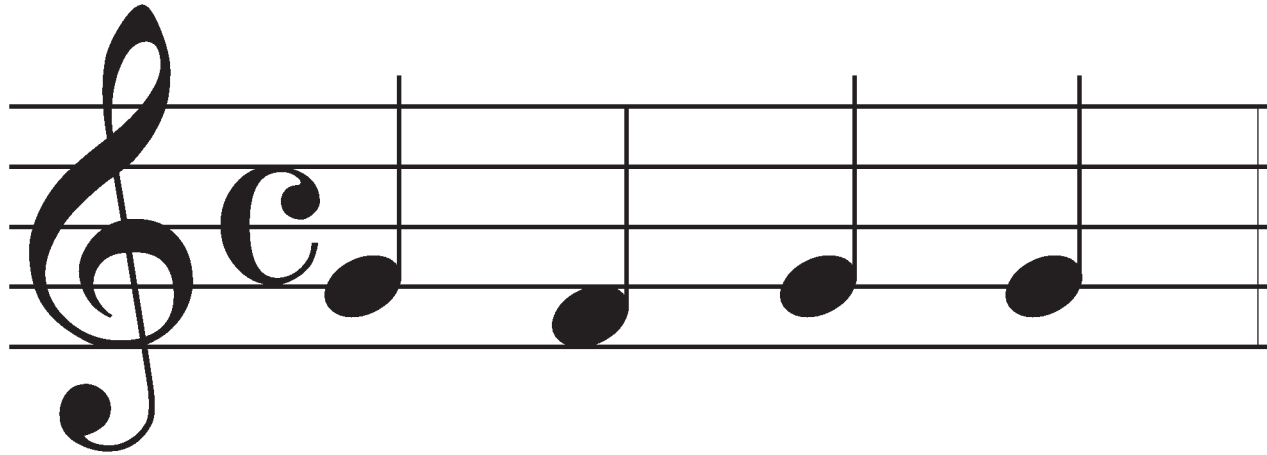


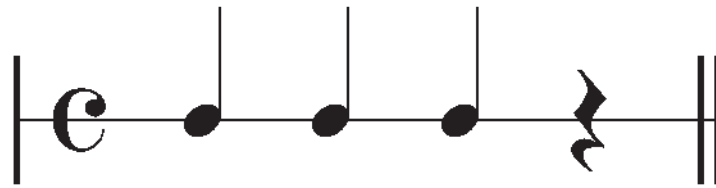






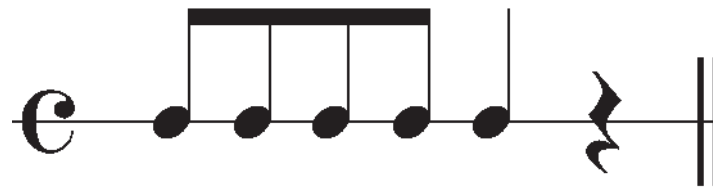


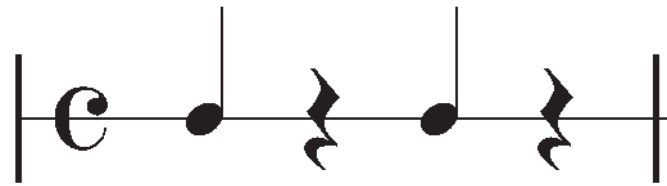


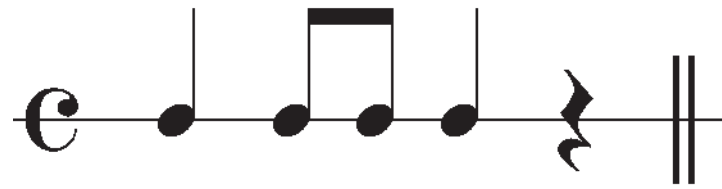








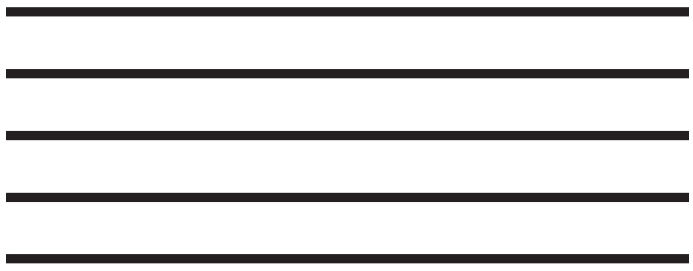








Foundation - Bronze Level



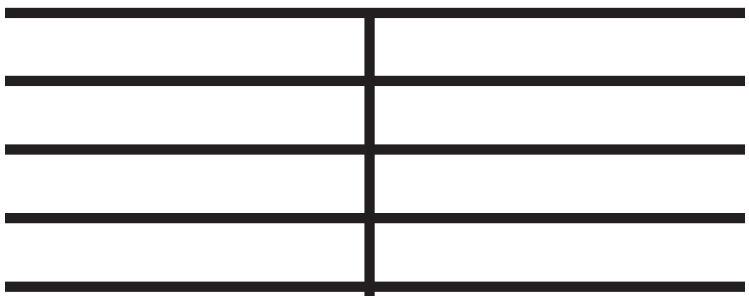
Foundation - Bronze Level



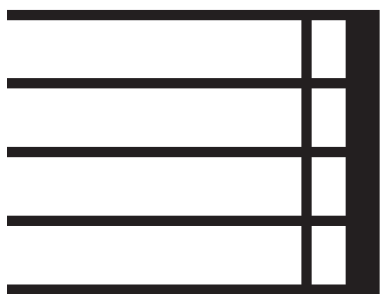
Foundation - Bronze Level



Foundation - Bronze Level



Foundation - Bronze Level



Foundation - Bronze Level

