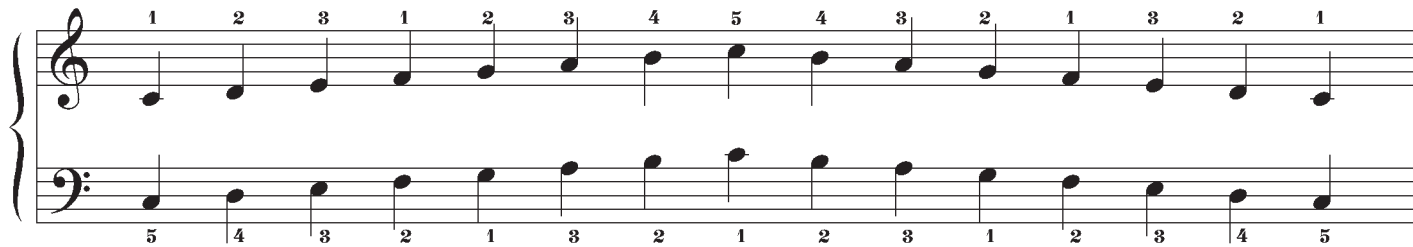


C MAJOR SCALE



Right Hand



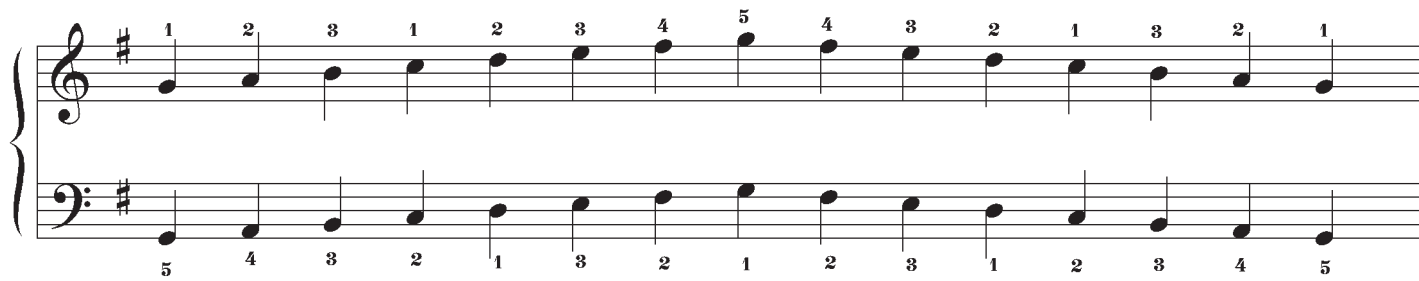
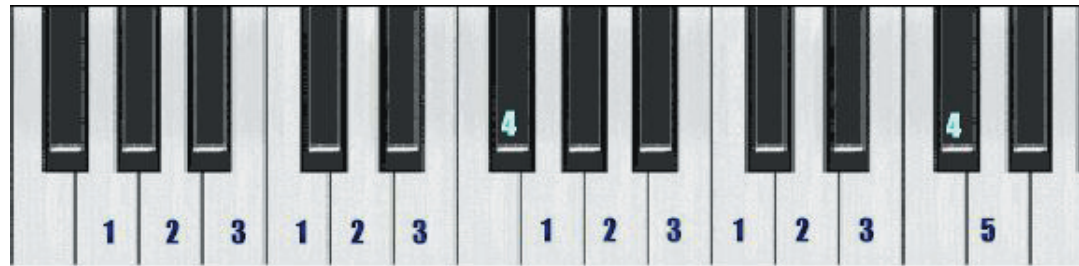
Left Hand



G MAJOR SCALE



Right Hand



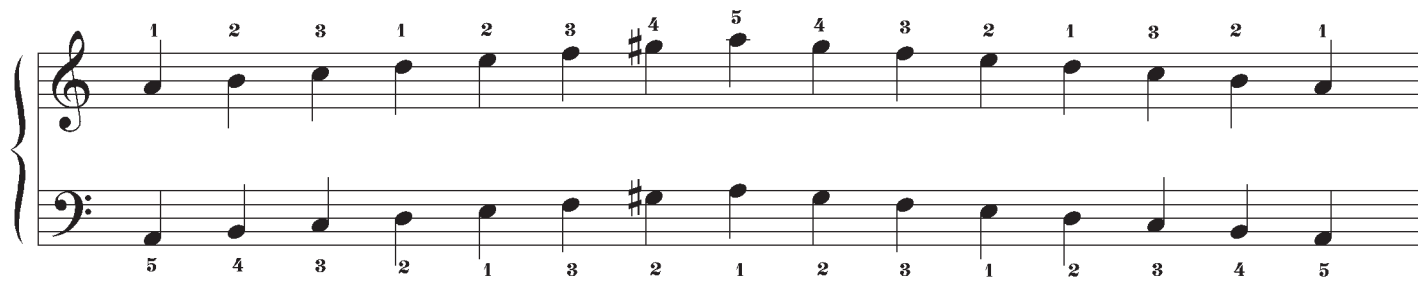
Left Hand



A HARMONIC MINOR SCALE



Right Hand



Left Hand



C MAJOR CONTRARY MOTION SCALE



Musical notation for the C Major Contrary Motion Scale, consisting of two staves (treble and bass clef) with fingerings indicated by numbers 1-5 above and below the notes.

The scale is written in C major, spanning from C4 to C5. The treble clef staff shows the ascending scale (C4 to C5) and the bass clef staff shows the descending scale (C5 to C4). Fingerings are indicated by numbers 1-5 above and below the notes.

Treble Clef (Ascending): C4 (1), D4 (2), E4 (3), F4 (1), G4 (2), A4 (3), B4 (4), C5 (5), B4 (4), A4 (3), G4 (2), F4 (1), E4 (3), D4 (2), C4 (1).

Bass Clef (Descending): C5 (1), B4 (2), A4 (3), G4 (1), F4 (2), E4 (3), D4 (4), C4 (5), B4 (4), A4 (3), G4 (2), F4 (1), E4 (3), D4 (2), C4 (1).